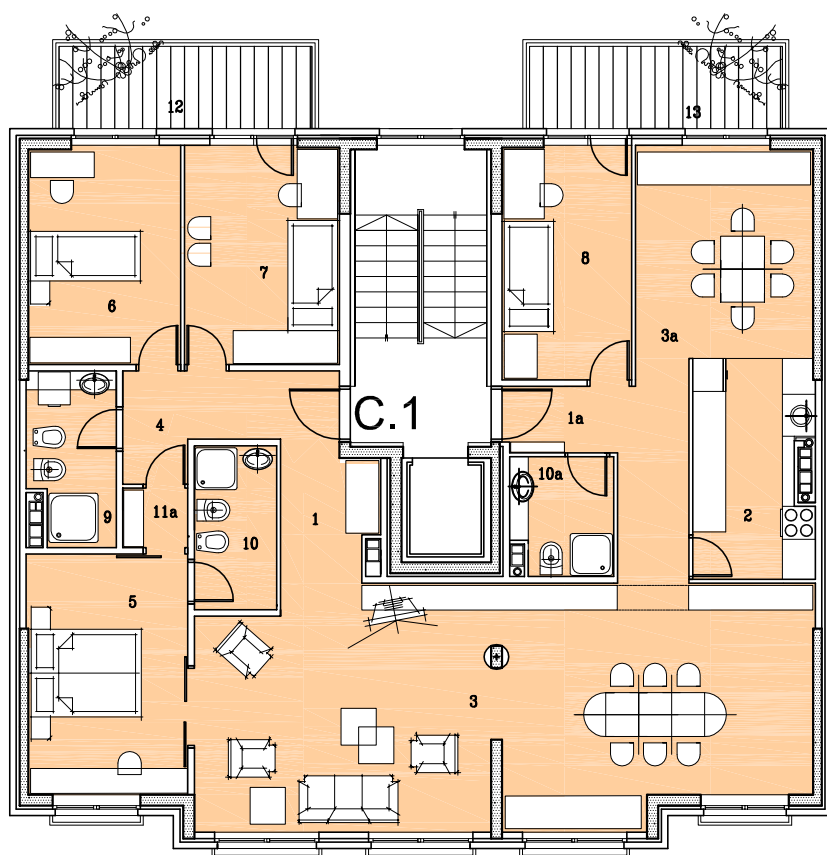
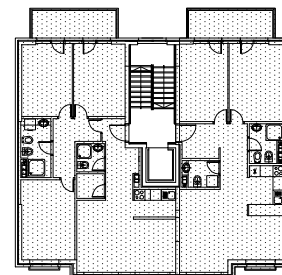


# BEOGRAD - STAMBENO POSLOVNI OBJEKAT

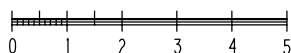
u ulici Vojvode Petka broj 2

stan C.1 - petosoban



## LEGENDA

1	ULAZ	6.58
1a	ULAZ	7.07
2	KUHINJA	8.30
3	DNEVNA SOBA	47.84
3a	DNEVNA SOBA SA RUCAVANJEM	12.96
4	DEGAZMAN	3.48
5	SPAVACA SOBA	12.75
6	SPAVACA SOBA	10.98
7	SPAVACA SOBA	11.22
8	SPAVACA SOBA	10.04
9	KUPATILO	4.85
10	KUPATILO	4.47
10a	KUPATILO	2.97
11a	GARDEROBA	1.27
UKUPNO BEZ TERASE		144.78M2
12	TERASA	6.90
13	TERASA	6.90
U K U P N O SA TERASOM		



**158.58 M2**

Investitor:  
RB AMENOFIS D.o.o.

projektovanje • inženjering • konsalting

**Arcada** Beograd